

This document has been prepared by AECOM Ltd ("AL") for the sole use of our Client (the "Client") and in accordance with generally accepted consultancy principles, the budget for fees and the terms of reference agreed between AL and the Client. Any information provided by third parties and referred to herein has not been checked or verified by AL, unless otherwise expressly stated in the document. No third party may rely upon this document without the prior and express written agreement of AL.

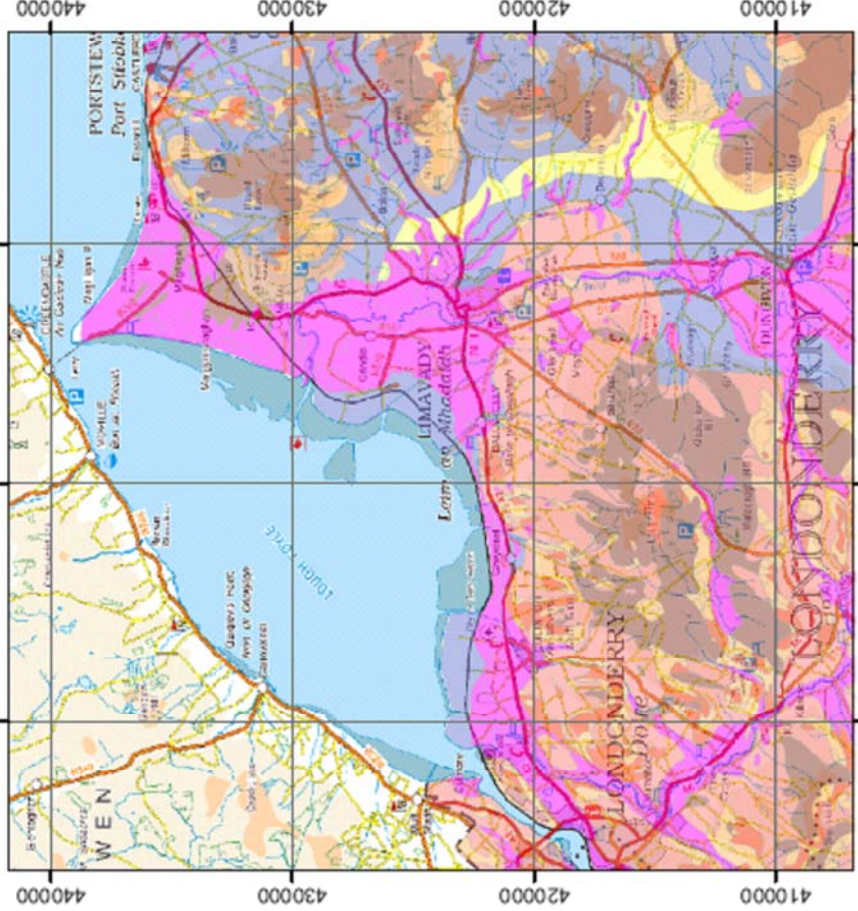
Hydrogeological information



Legend

Groundwater vulnerability

- 1 - low
- 2
- 3
- 4a - high permeability superficial deposit
- 4b - moderate permeability, but thin superficial deposit
- 4c - low permeability, but thin superficial deposit
- 4d - thin soil cover
- 4e - superficial aquifer
- 5 - high



This map is included to assist with your site assessment. Please note that it provides regional information only, based on 1:250,000 maps and more detailed geological information is available for consultation at the Geological Survey of Northern Ireland. Conditions can vary locally and you might wish to confirm the conditions at your site during a site investigation.

Exact vulnerability at your site cannot be assessed without site specific investigation due to the natural variability of geological conditions. Please note that where superficial deposits have been removed due to building, construction work or similar and bedrock is now close or at the surface the groundwater vulnerability increases to class 5.

Based upon Ordnance Survey of Northern Ireland's data with the permission of the Controller of Her Majesty's Stationary Office, © Crown Copyright and database rights EMOU206.2.



Geological Survey of Northern Ireland

Client:	Regional Development	Title:	Figure 5.5		
	ROADS Service		Ground Water Vulnerability Map		
Project:	A2 Ballykelly Bypass : Stage Two	Design:	CAD:	RS	
			Chk'd:	TMcK	App'd:
		Date:	18/02/2010	Scale:	NTS Print @ A3
		No. 60098645		Rev:	



225 Bath Street,
Glasgow, G2 4GZ
Tel: +44 (0) 141 222 6400
Fax: +44 (0) 141 222 6499
www.aecom.com