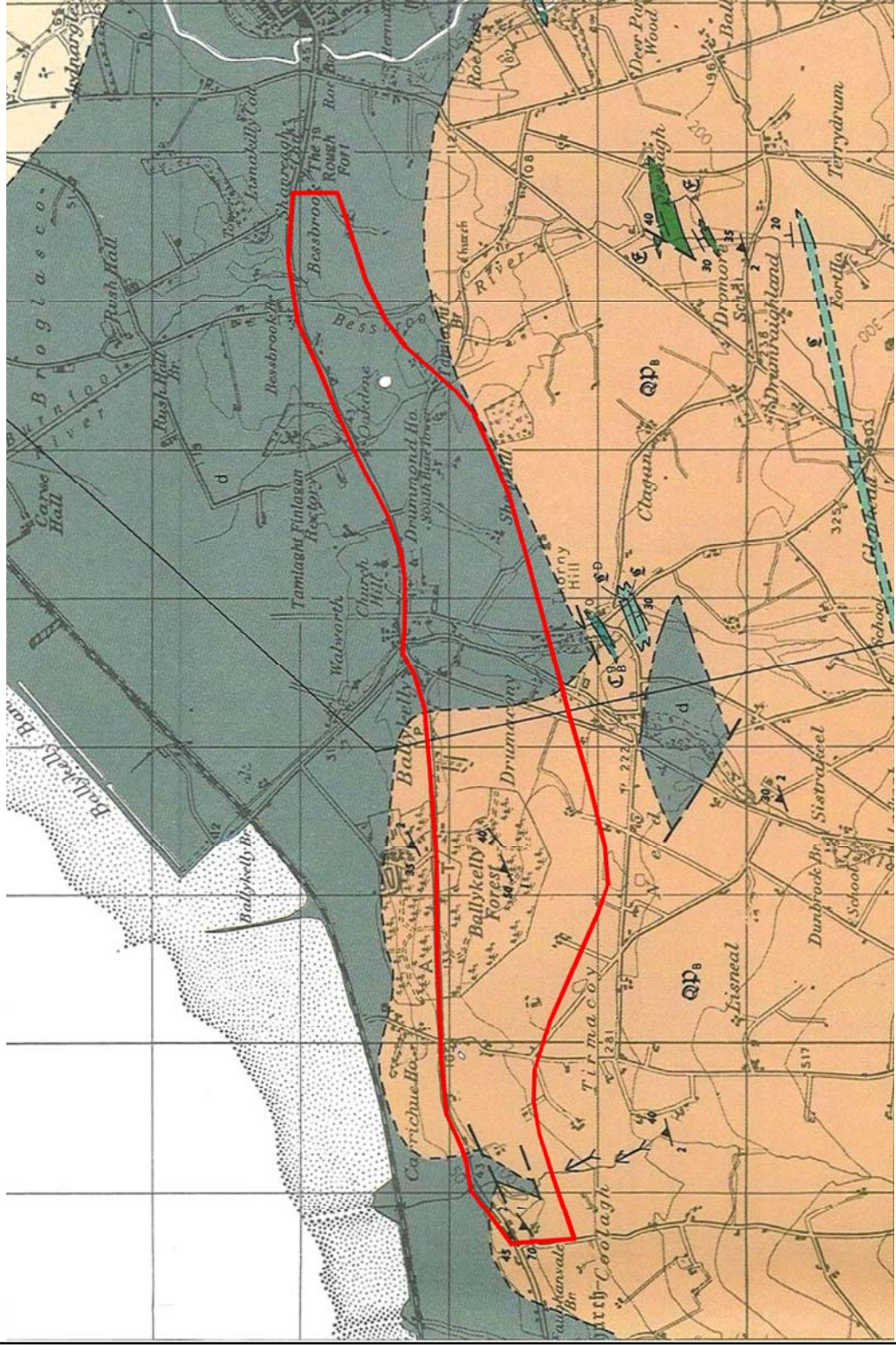


"This document has been prepared by AECOM Ltd ("AL") for the sole use of our Client (the "Client") and in accordance with generally accepted consultancy principles, the budget for fees and the Client. Any information provided by third parties and referred to herein has not been checked or verified by AL, unless otherwise expressly stated in the document. No third party may rely upon this document without the prior and express written agreement of AL."



**TRIASSIC**  
**Penarth Group**  
**Ig** Pennantian: Medium to dark grey fossiliferous mudstones with many thin fine-grained limestones in the upper part

**Mercia Mudstone Group**  
**I\*** Lower Permian: Thin bedded, red and greenish mudstones, commonly with siltstone and shales, some green muds at the top, sandstone beds present but generally thin

**Sherwood Sandstone Group**  
**I\*\*** Mostly reddish brown sandstones, pebbly in parts

**CARBONIFEROUS (MOSTLY UPPER VIBEAN AND LOWER NAMURIAN)**  
**d** Sandstones, light brown and grey to pink with deep red, green and grey mudstones; quartz-pebble conglomerate at base in places

**UPPER DALRADIAN (MOSTLY CAMBRO - ORDOVICIAN)**  
**QP0** Southern Highland Group  
 Londonderry Formation: Mixed psammitic and pelitic schistose rocks, grey to greenish grey, chloritic

**C1** Semi-calclitic schistose grit, mostly grey

**P** Pelitic schists mostly, slaty in parts, medium to dark grey

**QP1** Ballykelly Formation: Mixed psammitic and pelitic schistose rocks, grey to greenish grey, chloritic

**P1** Pelitic schists mostly, slaty in parts, medium to dark grey

**S** Crystalline limestone with calcareous schists, mostly light grey

**EP** Dolomites, weathers light brown

**Q2** Quartzose schistose grits or greywackes, grey

**C2** Semi-calclitic schistose grits, mostly grey

**S1** Epidioritic, basic igneous rocks, dark greenish grey, usually cleaved; origin probably mostly extrusive but may include intrusive members

**S2** Epidioritic, basic igneous rocks, dark greenish grey, usually cleaved; origin probably mostly extrusive but may include intrusive members

**Q3** Claydy Formations: Quarzitic schistose grits or greywackes, grey

**P2** Pelites dominant; medium to dark grey

**Q** Quartzite, pale grey

**INTRUSIVE IGNEOUS ROCKS (MOSTLY TERTIARY)**  
**0** Dolerite: in dyke sill and plug form

**+** Inclined strata, dip in degrees  
**+** Horizontal strata  
**1, 2, 3** Cleavage indicated, dip in degrees; number 1, 2 or 3 indicates association with a fold phase  
**1, 2, 3** Dips in degrees; which younger beds come on, evidence from graded bedding  
**---** Geological boundary  
**---** Fault at surface, crossmark indicates downthrow side  
**---** Broken lines denote uncertainty

Design:	CAD:	RS
Chk'd:	TMck	App'd: TMck
Date:	22/02/2010	Scale: NTS Print @ A3
No. 60098645		Rev:

**AECOM**

Tel: +44 (0) 141 222 6400  
 Fax: +44 (0) 141 222 6499  
 www.aecom.com

225 Bath Street,  
 Glasgow, G2 4GZ

Title: Figure 5.2  
 Solid Geology Map

Client: **ROADS Service**  
 A Department for Regional Development

Project: **A2 Ballykelly Bypass : Stage Two**

WC

A3