

Controlled Pedestrian Crossings

Almost everyone needs to cross a road several times a day. Usually, this is done at any safe and convenient point along the road using the Green Cross Code (see page 6 of the Highway Code for NI). But there are some locations where, because of the high volume of traffic, high numbers of pedestrians or other factors, it is beneficial to provide a 'controlled crossing' such as a Pelican, Zebra or Toucan Crossing.

Roads Service is responsible for providing these crossings and we continually receive requests for new ones. We endeavour to act fairly and consistently when deciding which crossings to install to ensure that the limited funding available is targeted at locations of greatest need.



New assessment guidance has been developed that will allow us to provide more crossings and will make an additional allowance for the needs of the more vulnerable road users such as:

- Elderly people
- Pedestrians with prams
- Unaccompanied children
- Visually and hearing impaired people
- People with mobility problems.

The assessment process has two parts.

First, an initial check of the pedestrian and vehicle volumes - this allows us to focus our assessments on sites with more significant pedestrian and vehicle flows - and second, the use of a points scoring system to help Roads Service decide which assessed sites have the highest priority.

The initial check also confirms whether the site is suitable for a crossing. Roads Service does not normally provide crossings where:

- The speed limit on the road is 50 mph or more
- There is already another crossing nearby
- The location is considered unsafe.



The full assessment of the site takes account of the following key factors:

- The number of pedestrians needing to cross the road
- The number of vehicles using the road
- The speed of the traffic
- The width of the road and the number of lanes to be crossed
- The proximity to public amenities such as

schools, libraries, health centres etc.

- The number of vulnerable and less mobile road users
- The pedestrian collision history of the site.

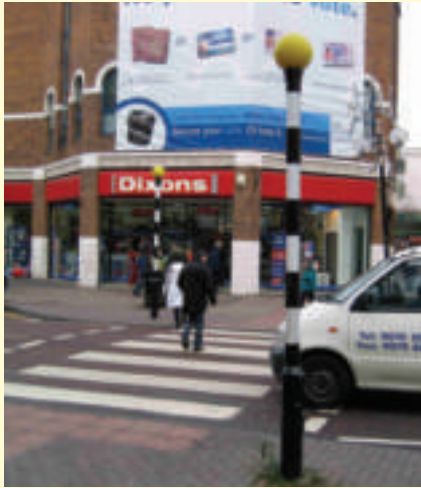
These factors along with quite a few others are identified by a detailed site survey. A 2-hour traffic survey, based on the two busiest hours, is also needed to count the number of pedestrians and the volume of traffic. The information from both surveys is then transferred to a scorecard that is used to assign a points score to the site being assessed. A higher score shows a greater need.

The entire process of initial check, detailed surveys, scorecard completion and prioritisation will take a number of weeks to complete. If a controlled crossing is needed, there are three options available.

A Pelican Crossing is one activated by pedestrians pressing a button. If a red figure shows it means pedestrians must wait. When a green figure shows, pedestrians should check that it is safe then walk straight across the road on the crossing. When the green figure begins to flash, pedestrians should not begin to cross although it should be safe for them to continue if they are already on the crossing.



A Zebra Crossing has black and white stripes and flashing yellow belisha beacons. Vehicles must stop at a zebra crossing when a pedestrian has stepped onto the crossing.



A Toucan Crossing is one where the crossing is shared with cyclists, usually on a designated cycle route. The crossing is similar to a pelican crossing except that there are separate signals for pedestrians and cyclists and no flashing “green man” phase.

Roads Service also provides pedestrian crossing facilities at most traffic signal controlled junctions, where this is necessary and practical.



Other facilities can also be extremely helpful to pedestrians wishing to cross the road, for example, footway build-outs and central refuges reduce the width of the road to be crossed and provide reassurance to the user. They also allow the user the comfort of only having to deal with traffic from one direction at a time. School Crossing Patrols are also useful and are the best crossing arrangement where pedestrian activity is only significant at school start and finish times.

If you have any queries regarding Controlled Pedestrian Crossings in your area, please contact your local Divisional Office at -

Northern Division

County Hall Castlerock Road Coleraine BT51 3HS (028) 7034 1300	County Hall 182 Galgorm Road Ballymena BT42 1QG (028) 2565 3333	1 Crescent Road Londonderry BT47 2NQ (028) 7132 1600
--	---	---

Western Division

County Hall
Drumragh Avenue
Omagh
BT79 7AF
(028) 8225 4111

Eastern Division

Hydebank
4 Hospital Road
Belfast
BT8 8JL
(028) 9025 3000

Southern Division

Marlborough House Central Way Craigavon BT64 1AD (028) 3834 1144	Rathkeltair House Market Street Downpatrick BT30 6AJ (028) 4461 2211
--	--

Should you require this document in an accessible format e.g. Braille, audio-cassette, minority ethnic language etc; please contact-

Transportation Unit

Avenue House
42/44 Rosemary Street
Belfast
BT1 1QE
(028) 9040 8000

E-mail: roads.transportation@drdni.gov.uk

Website: www.roadsni.gov.uk



Controlled Pedestrian Crossings

